

SILVER LINING CLOUD™ 2 in 1 activity floor seat



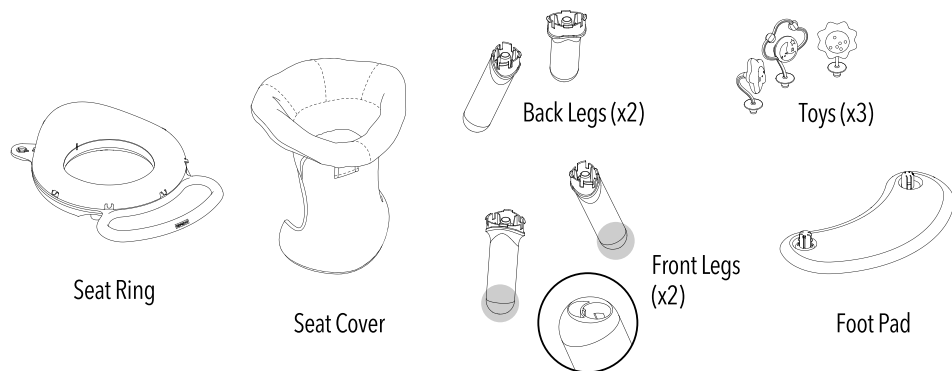
For infants
able to hold
their head up
unassisted,
up to 25 lbs

OWNER'S MANUAL

Read all instructions carefully before using the floor seat. Do not use this infant floor seat if it is damaged or broken.

IMPORTANT! KEEP INSTRUCTIONS FOR FUTURE USE

CONTENTS:



CLEANING AND CARE:

Cover: Machine wash cold, gentle cycle. No bleach. Dry flat. Do not iron. Do not dry clean.

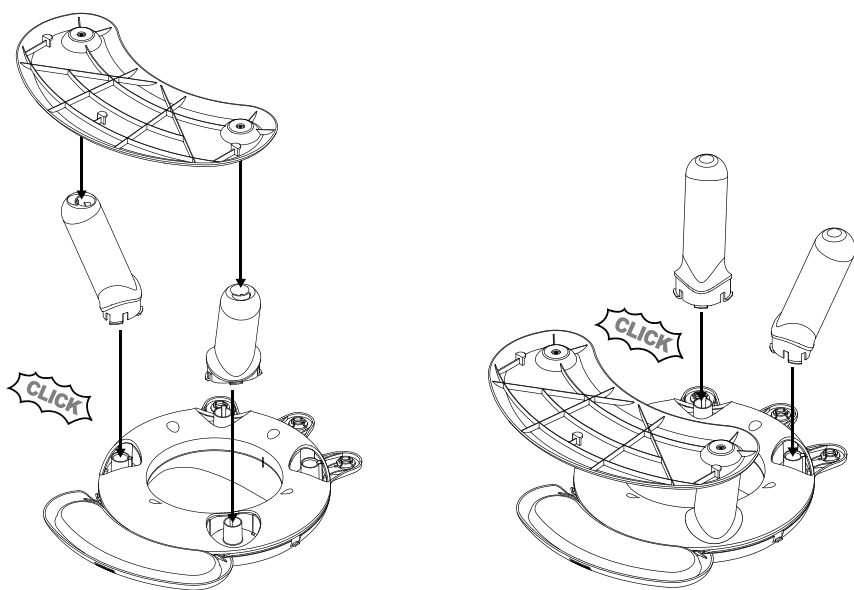
Toys: Wipe with a damp cloth.

Seat: Wipe with a damp cloth.

Tray: Wipe with a damp cloth.

ASSEMBLY

Adult assembly required.



1. Press front legs into seat ring until you hear a click. Press foot pad on to the front legs. You will hear a "click" sound when they are locked.

2. Insert back legs into seat ring. You will hear a "click" sound when they are locked.

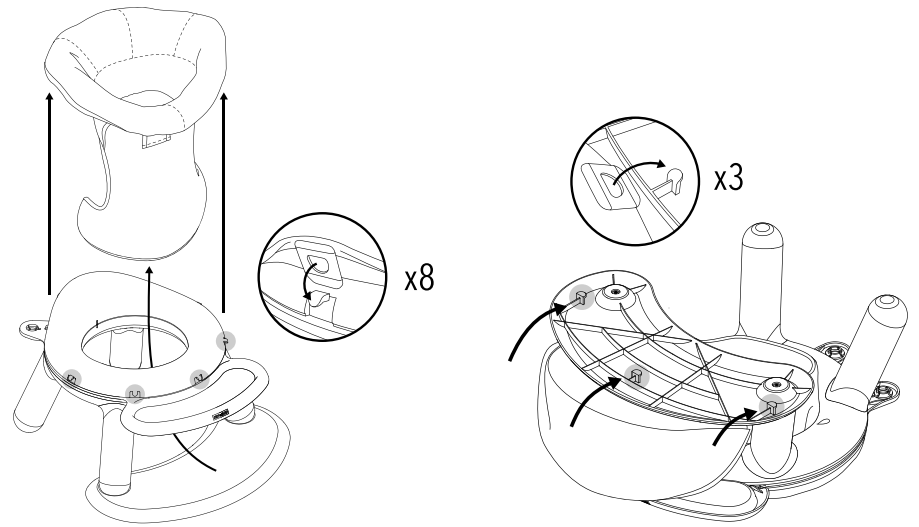
© 2019 Skip Hop, Inc.
SKIP HOP, MUST-HAVES MADE BETTER,
and SILVER LINING CLOUD are trademarks
owned by Skip Hop, Inc. All rights reserved.
50 W 23 ST, NY, NY 10010
In the US: 888.782.9548
www.skiphop.com
Made in China

Meets or exceeds ASTM
F963, EN71 and applicable
safety standards.



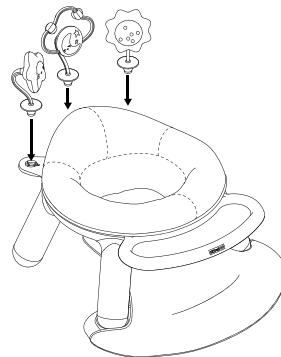
Tray
For your child's safety and health:

WARNING! Always use this product with adult supervision. Before each use, inspect the product. Throw away at the first sign of damage or weakness. This product is not a toy. Always check food temperature before feeding. Do not store in direct sunlight, as this may damage product. Before first use, clean the product. Inspect & wipe clean thoroughly before first use and after each use. Clean after each use, as soon as possible.



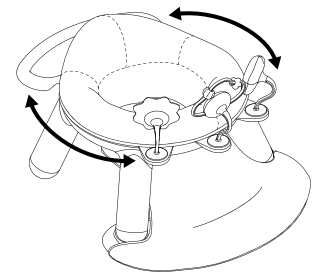
3. Turn seat over and insert seat cover through the middle of the seat. Attach all 8 clips on the cover to the seat.

4. Turn seat over and slide the end of the seat cover on to the foot pad. Attach all 3 clips on the cover to the foot pad.



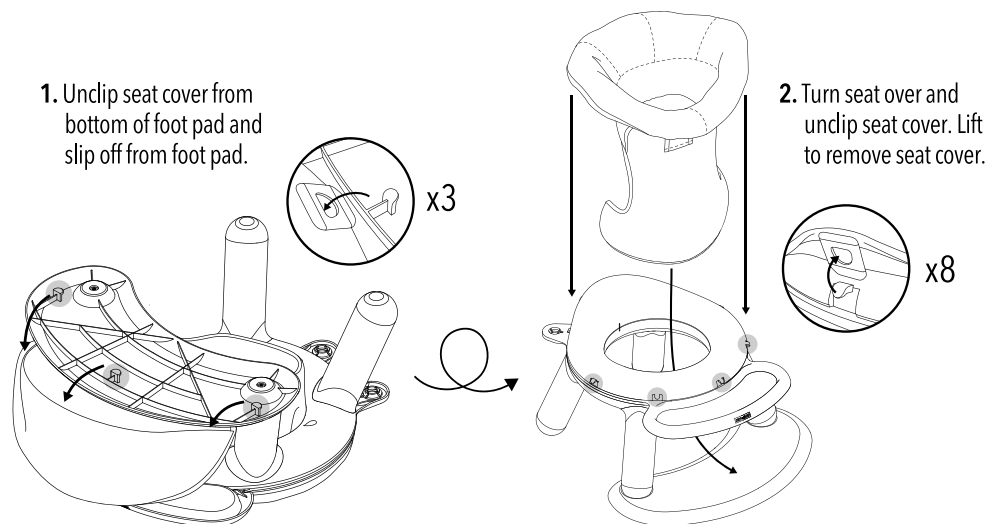
5. Insert toys into seat ring.

PLAY MODE



Rotate tray to switch between mealtime and fun time.

REMOVING THE COVER FOR CLEANING



1. Unclip seat cover from bottom of foot pad and slip off from foot pad.

2. Turn seat over and unclip seat cover. Lift to remove seat cover.

⚠ WARNING

This article shall not be placed on a height, or any type of support. Never use on raised surfaces such as tables, counters, chairs, sofas, beds, or near stairs to prevent risk of serious injury from falls. This product shall be placed on the ground on a horizontal, firm, level and dry surface. Keep away from walls or other objects your child could push against to avoid tip over. Do not use if any of the components are broken, torn or missing. This product shall be used for a child that has developed muscles in his/her back and is able to be sit without support. It is not recommended to use the seat for long periods of time (max 20 minutes rec.). Only use spare parts delivered or approved by the manufacture. Be aware of the risk of open fire and other sources of strong heat, such as electric bar fires, gas fires etc. in the near vicinity of the product. Do not use near stairs or hazards such as fireplaces, heaters, stoves, ovens or other dangerous areas. Never use as a booster seat, high chair, car seat, bath seat, or child carrier. Do not use in motor vehicle. Check product regularly for any sign of damage or wear.

⚠ WARNING

FALL HAZARD: Infants have suffered skull fractures falling while in and from floor seats.

- Use **ONLY** on the floor.
- **NEVER** use on an elevated surface.
- **NEVER** lift or carry child in the product.
- Use **ONLY** with a child that is able to hold their head up unassisted.
- **STOP** using when the child can climb out or walk.
- **ALWAYS** keep child in view while in product.

DROWNING HAZARD: Infants have drowned when floor seat has been placed in a bath tub or pool.

- **NEVER** use in or near water.